

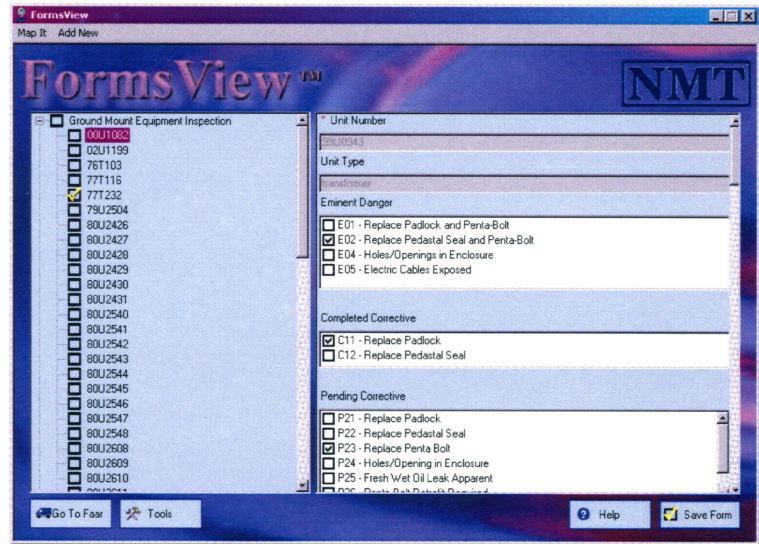


FormsView™

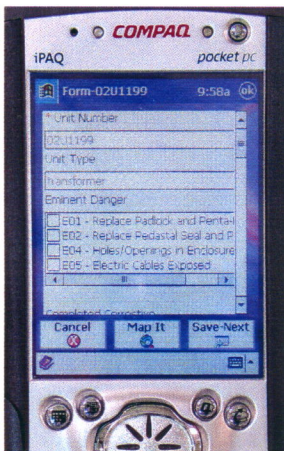
NMT's FormsView™ automates inspection and other data-acquisition tasks by integrating two of the major components of field automation—filling out forms and viewing graphical and textual facility data—into one package.

You can use FormsView with either NMT's FAAR® or PocketFAAR software, operating in Microsoft® Windows® or Pocket PC environments. FormsView gives you the ability to zoom to and select a facility, and display a list of facility-specific forms in the graphical interface.

Because FormsView communicates with FAAR and PocketFAAR, your forms can be "pre-populated" from FAAR or a text file, reducing both data-entry time and input errors.



You can identify and pinpoint facilities on the FAAR display, such as transformers or poles, to assist in locating and planning the day's work. You can start FormsView and select an item to be inspected from a preloaded "to-do" list, or create lists of items to be inspected by performing a simple query from within FAAR.



Upon completion, your forms are stored in an industry-standard database and may be easily exported to a central database.

Create your own forms using the included wizard. Each form is stored in XML providing greater flexibility in both layout and data-validation options. Form layout takes advantage of standard Windows controls such as check boxes and drop-down lists, simplifying design and increasing data consistency. Paper forms can be easily emulated, minimizing training time.

NMT provides a wide range of services and software products designed to increase your efficiency and productivity through information access. Start putting your GIS data to work today with FormsView.